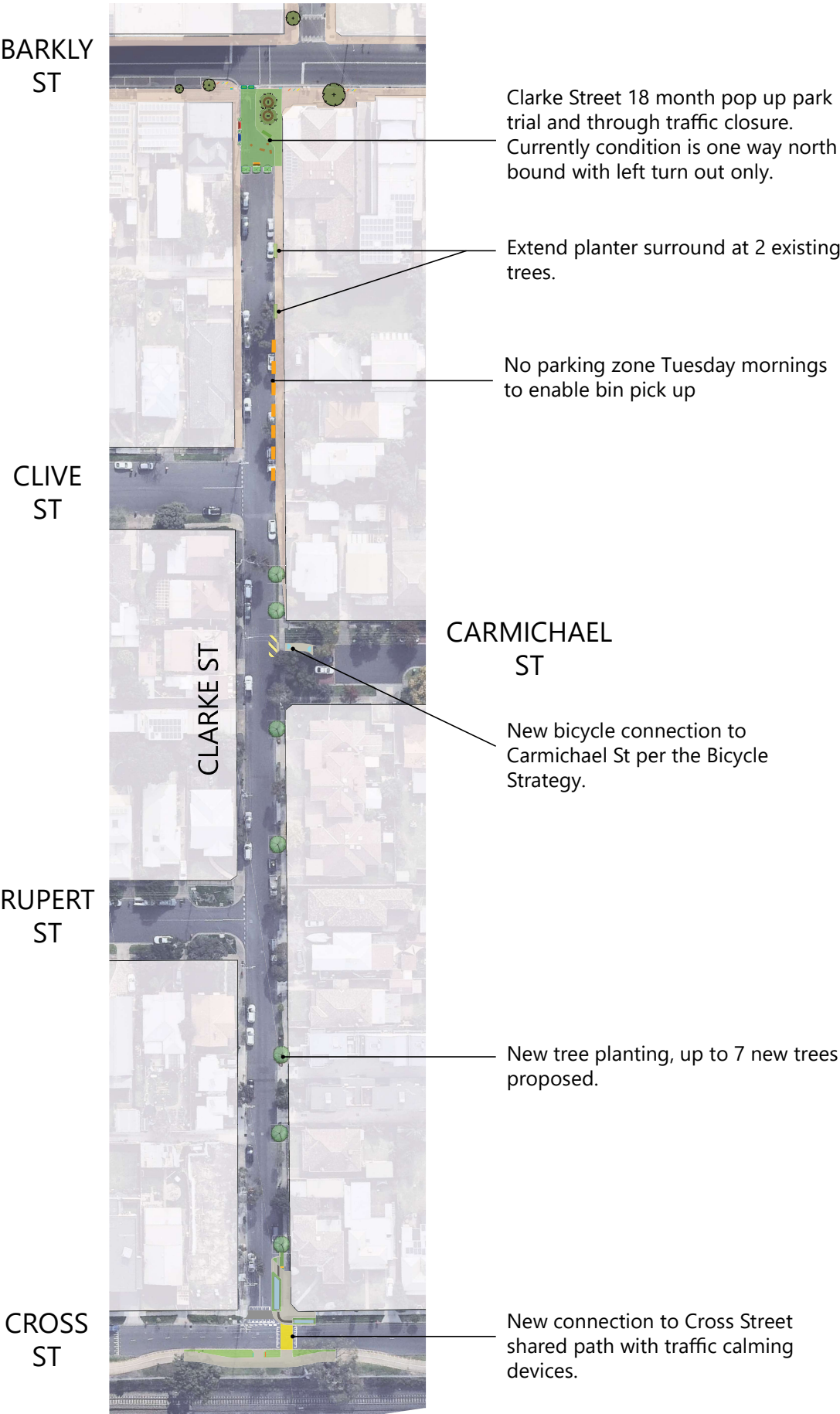


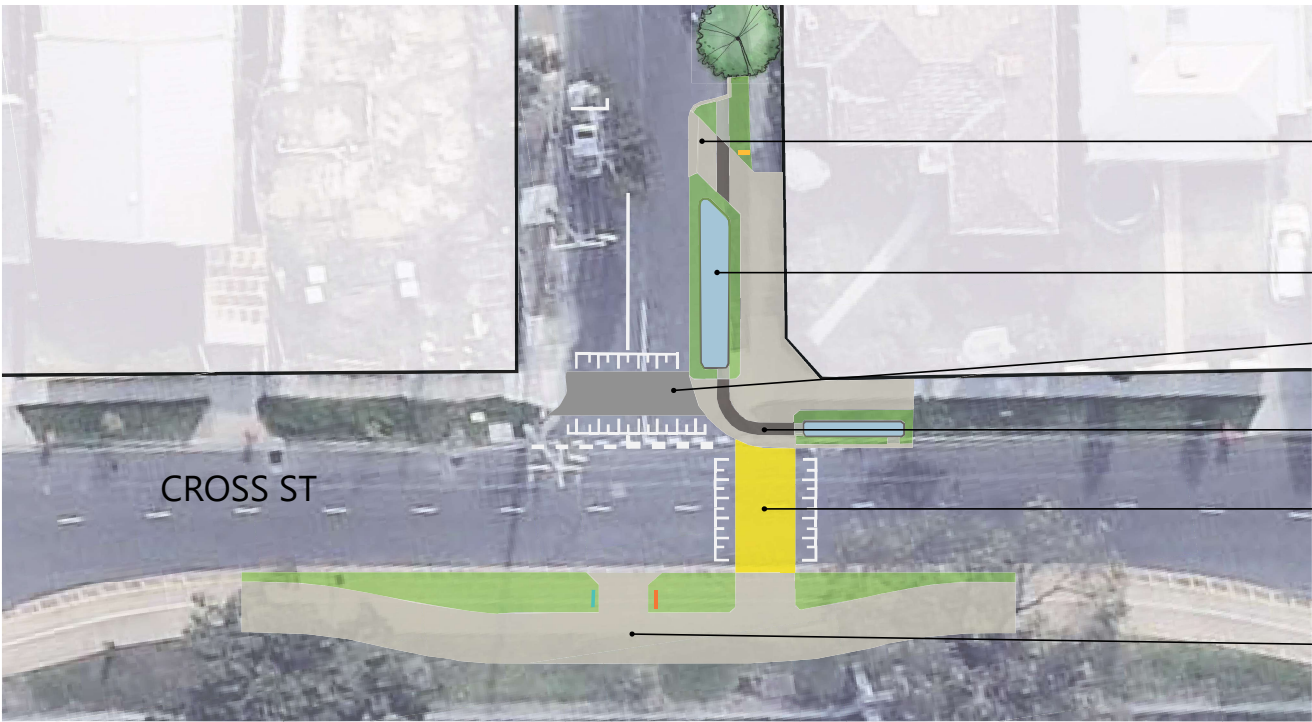
# Clarke Street Improvements



Overview of Clarke St



Plan of Bicycle and Pedestrian Improvements at Clarke St and Carmichael St



Plan of Bicycle and Pedestrian Improvements at Clarke St and Cross St

- The concept plans are subject to Department of Transport and Melbourne Water approvals.
- New shared path joins onto Clarke St with pram ramp, two parking spaces removed for shared path and rain gardens
  - New rain garden
  - New raised crossing
  - Heel guard grating over channels in footpath areas.
  - New pedestrian priority crossing over Cross St, connecting onto the shared pathway
  - Realign shared user path between existing mature trees. New bicycle access ramp to Clarke St with grab rails and directional signage