



Hansen Reserve Masterplan

Draft for Consultation

November 2017

Context Plan



View looking south



View looking northeast



Playground, entry from Robert Street carpark



Paths and seating, southeast corner



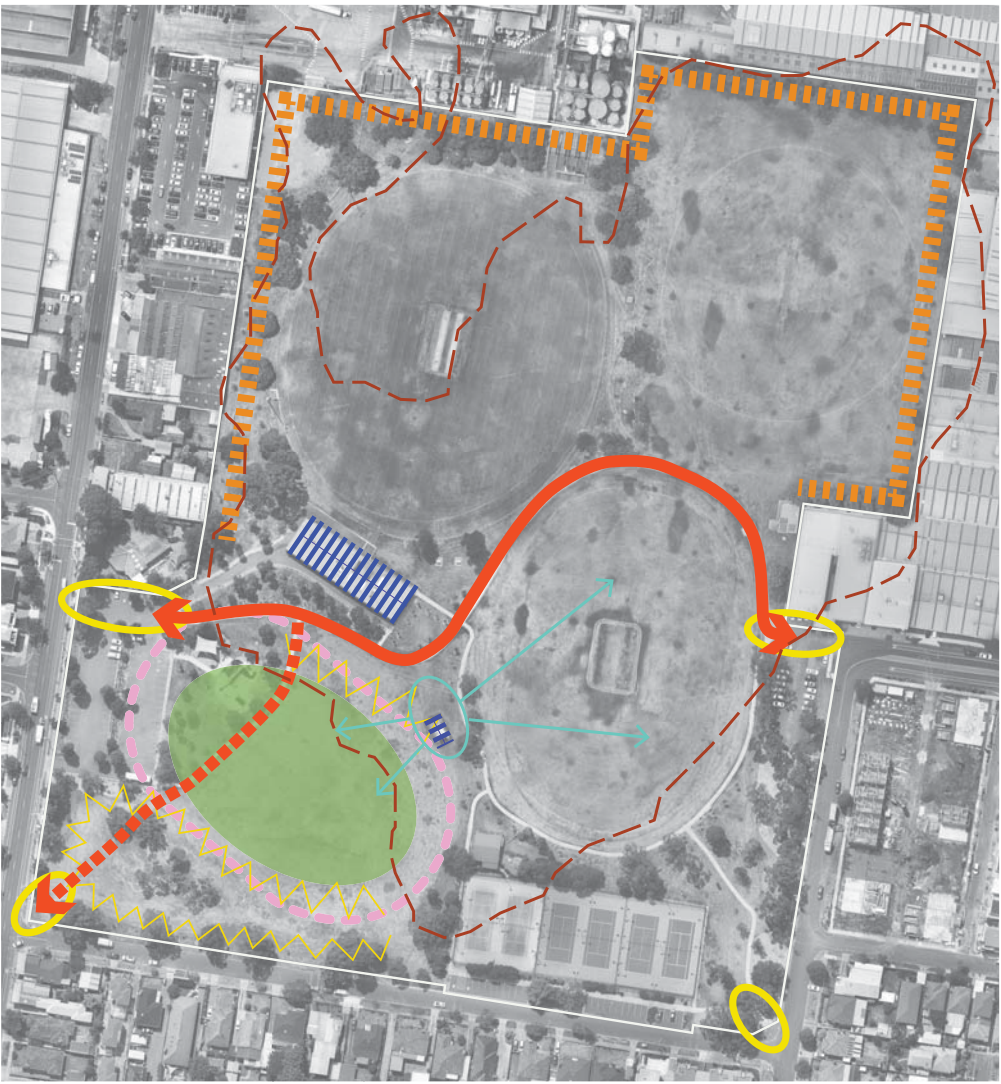
Glamis Road edge and carpark



Corner of Wattle and Roberts Street

Site photos: existing conditions

Site analysis



- Legend
- Main axis to improve
 - Potential expansion to main axis
 - Entry points - to improve
 - Retain mounded areas
 - Buildings create visual barrier
 - Views from elevated central point - opportunity for focal point - relocate air monitoring station
 - Flat central lawn - opportunity for informal recreation activities
 - Back fences - activate isolated northern edges of reserve to improve surveillance
 - Alignment of demolished velodrome
 - Alignment of quarry extents



Vision

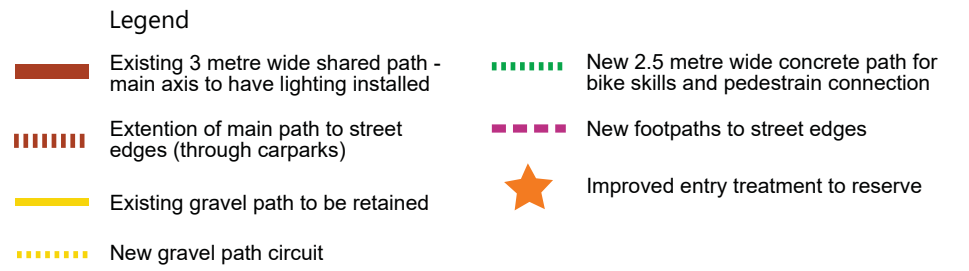
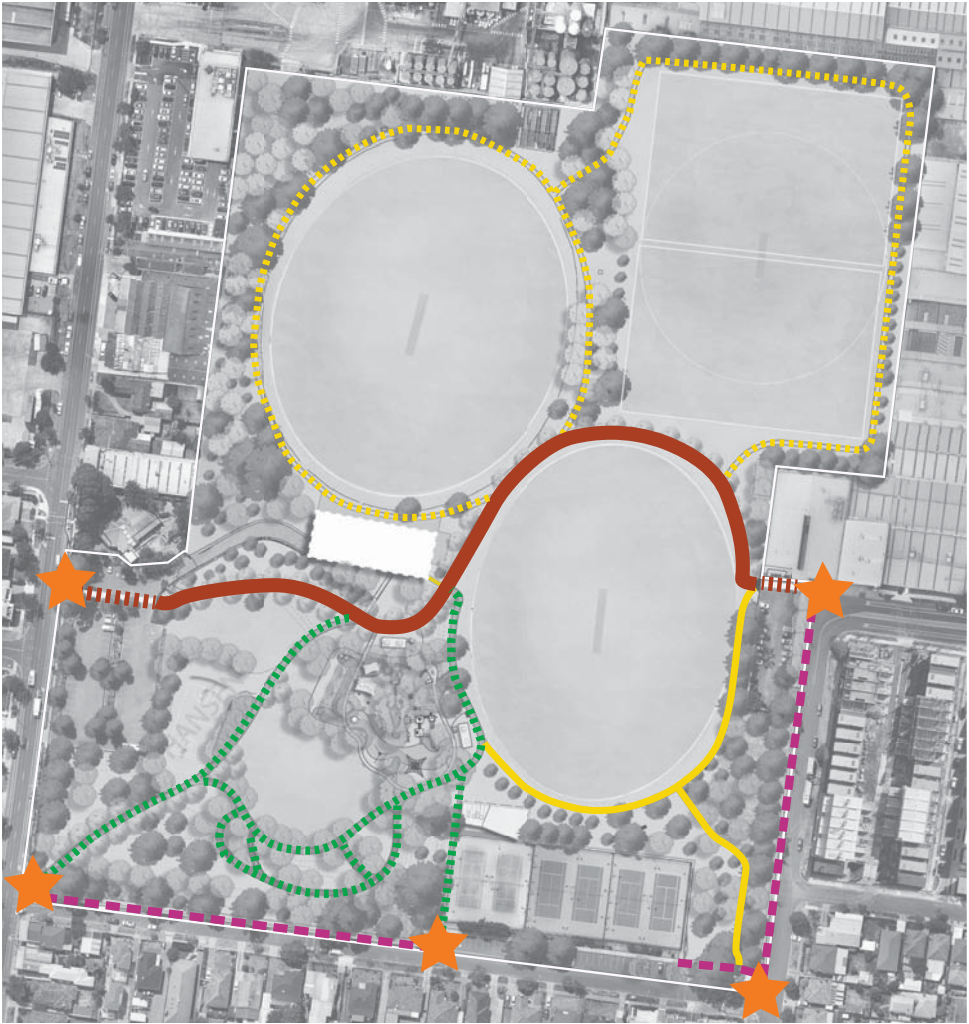
Hansen Reserve will be a key open space destination for the residents of West Footscray south of the rail line. The reserve will provide a high quality landscape in a wide open space setting, a variety of active and informal recreation, and park facilities in keeping with municipal reserve standards.

Key Principles

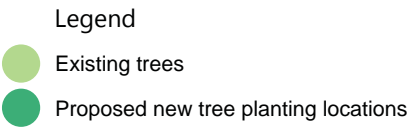
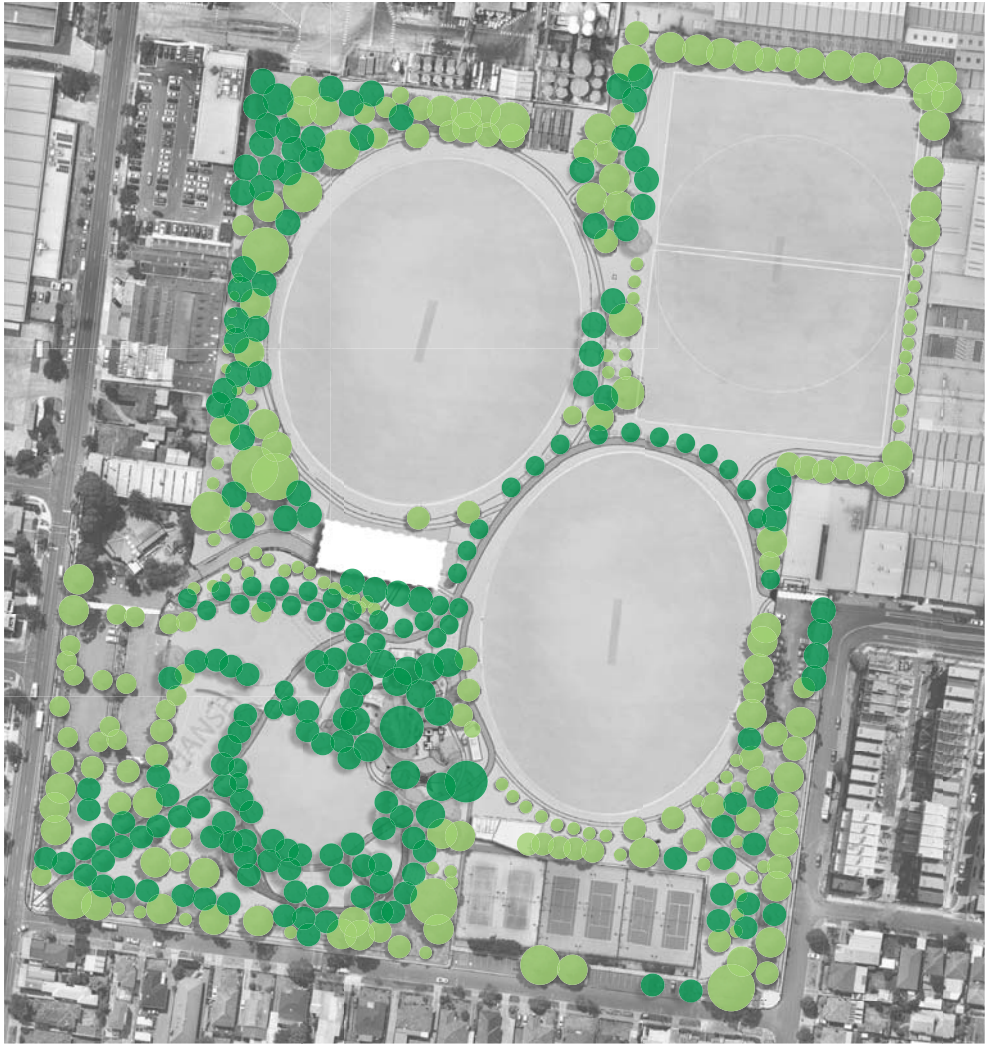
The key principles which have evolved from the community consultation and which now drive the Draft Masterplan are:

- Enhance pedestrian access through and around the reserve
- Improve the landscape character of the reserve and its presentation at street edges and entries
- Maintain the sporting focus and facilitate a greater range of informal recreation and community activity opportunities
- Increase tree canopy and enhance the environmental sustainability of the reserve

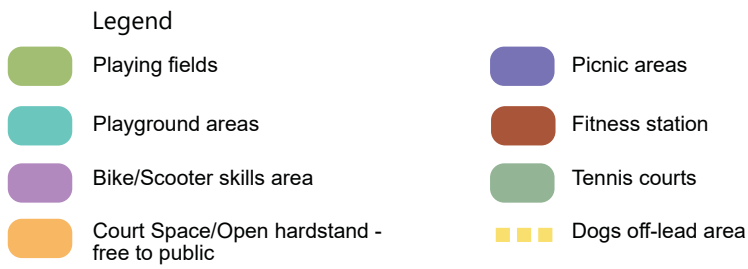
Arrival and circulation



Tree Framework



Recreation Activities





- KEY**
- 1 New Kingsville tennis pavilion
 - 2 Entry feature garden
 - 3 Improve access paths
 - 4 Formalise eastern carpark
 - 5 Pavilion refurbishment (subject to feasibility study) Co-locate public toilet
 - 6 Relocate and upgrade playground utilise 'Quarry' theme to reflect site history
 - 7 Picnic areas with shelters and BBQ
 - 8 New access path to sw corner of reserve
 - 9 Cycle skills track
 - 10 Basketball/netball practice space
 - 11 Skate elements and plaza space
 - 12 Fitness station
 - 13 Lighting along main east-west path
 - 14 New walking circuits to improve access and surveillance to north edges
 - 15 New footpaths along street edges
 - 16 Improve understorey planting

- LEGEND**
- Existing Trees to be retained
 - Proposed Trees - avenue along main path large, deciduous species
 - Proposed Trees - informal planting, various native species
 - Proposed Trees - feature planting: wattles
 - Garden bed planting
 - Concrete paths / pavement
 - Granitic gravel paths



Indicative view: entry garden, corner of Robert and Wattle St



Note: images convey indicative character of landscape features





KEY

- 1 Flying fox
- 2 Sandplay area with shade sail
- 3 Natureplay zone
- 4 Junior play equipment with shade sail
- 5 Mound with embankment slides, ropes and clambering rocks
- 6 Senior play unit with big slide
- 7 Carousel
- 8 Swings
- 9 Giant swing
- 10 Climbing net
- 11 Picnic areas with shelters and BBQ
- 12 Bicycle/Scooter skills circuit
- 13 Basketball court
- 14 Netball practice area
- 15 Skate elements around court area



Note: images convey indicative character of play elements, not actual equipment

