

Maribyrnong Heritage Review

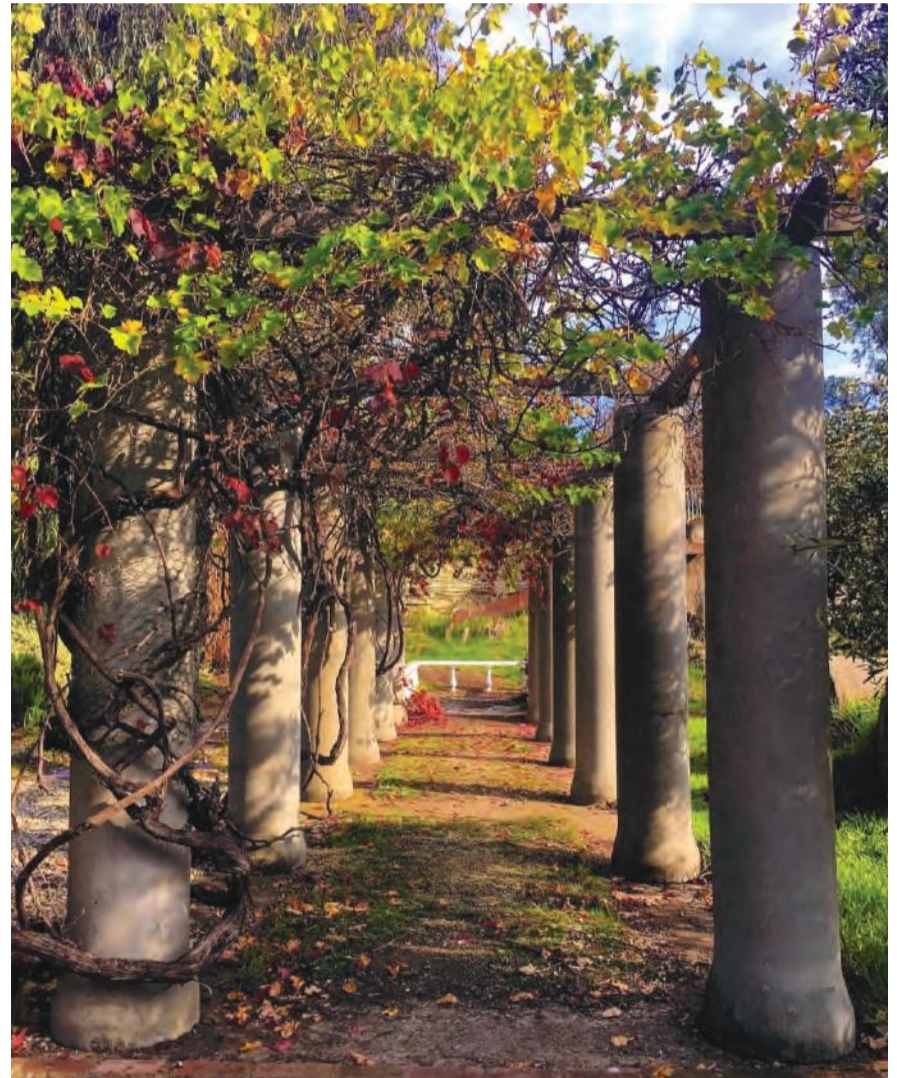
Challenges & Opportunities

APRIL 2023

Our City has been shaped by generations of diverse communities – from First Nations to the European settlers and waves of immigration and industry – whose influence on the way we live, the environment around us, our cultures, traditions, and our history has informed our unique heritage.

We all play an important role when it comes to understanding and preserving our City's heritage. Heritage includes elements like historical buildings, streetscapes, collections, natural features and archaeological sites, as well as unseen heritage such as cultural practices, stories and traditions.

To date, Council's work has been guided by the Maribyrnong Heritage Plan published in 2002. But a lot has changed since it was first written, including significant population growth, changes in the economy and environment, technological advancements and legislative reforms. These changes present both challenges and opportunities for our ability to manage heritage.



What we have heard so far:

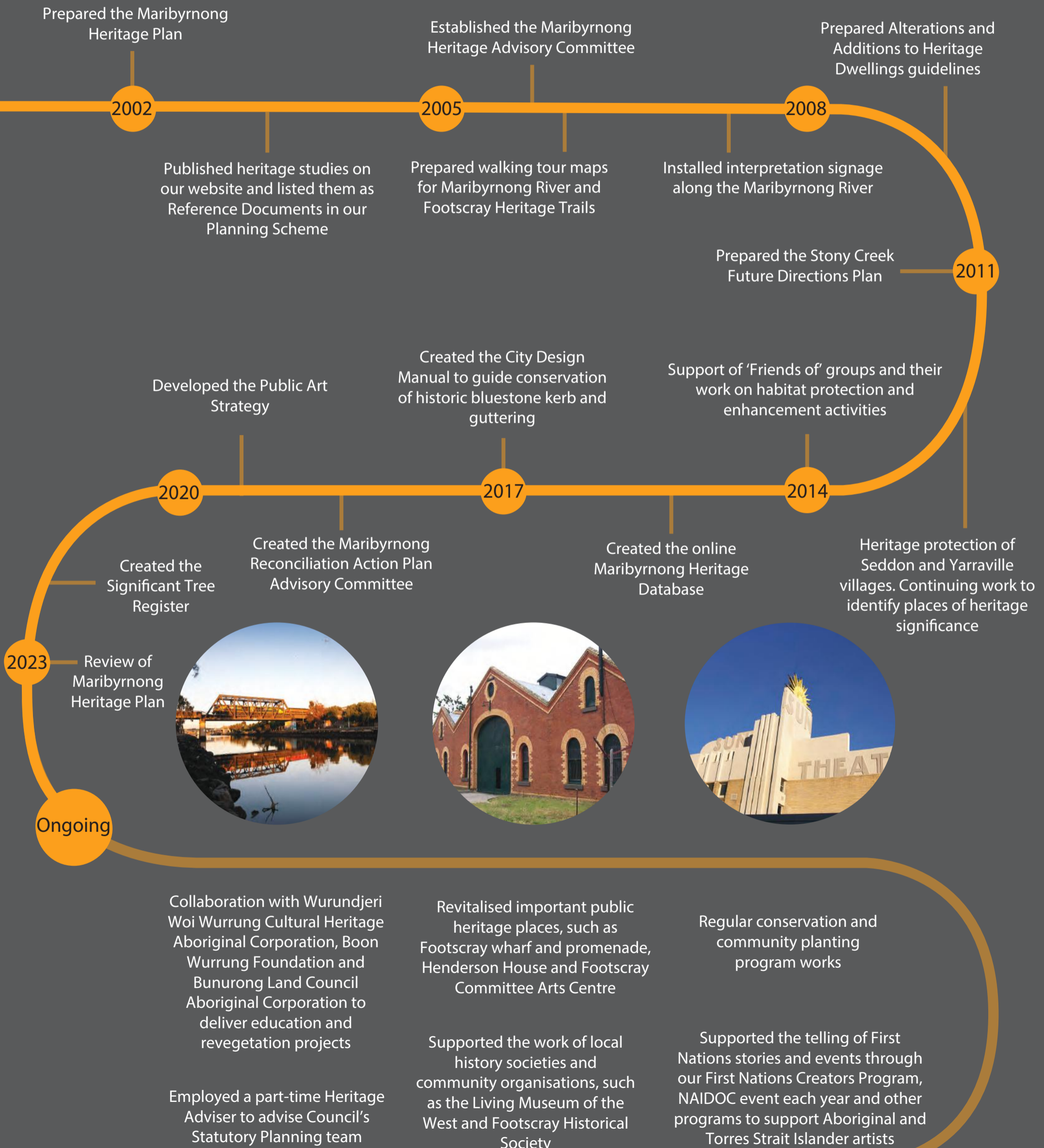
We know it's time for an update, so we started conversations in 2022 to help us identify what you think is worth valuing and protecting in Maribyrnong. We heard that Council should:

- Further recognise Aboriginal cultural heritage across the municipality
- Protect natural and built heritage from over development
- Celebrate our City's rich migrant and defense history
- Promote and celebrate heritage through festivals and events
- Share stories of our community through art and digital media
- Preserve historic streetscapes
- Maintain heritage buildings
- Protect significant trees and open space
- Repurpose historical industrial buildings



What have we achieved?

Since 2002, Council has undertaken many projects, studies and implemented works to protect, support and promote heritage throughout Maribyrnong. Key achievements include:



Challenges & Opportunities

The following challenges and opportunities have been identified based on community feedback, discussions with various stakeholders and the review of the 2002 Plan:

CHALLENGES INCLUDE:

Addressing gaps in our knowledge of Maribyrnong’s heritage and its many diverse cultures and histories.

Achieving best practice management of heritage assets Council owns and manages on behalf of the community.

Preserving and adapting our heritage places as our City grows and changes.

Challenges persist with integrating new development into our streetscapes.

Lack of awareness and protection of Maribyrnong’s pre- and post- contact Indigenous heritage.

Lack of awareness and protection of Maribyrnong’s natural heritage, including its significant trees, vegetation, waterways, landscapes and other natural features.

Citations and Statements of Significance for many heritage places are out-dated and do not adhere to current standards.

There are also a number of errors and anomalies in the Heritage Overlay schedule and mapping.

OPPORTUNITIES EXIST TO:

Conduct additional research to ensure all sites and objects of heritage significance are identified and managed.

Strengthen organisational knowledge and capacity to manage Maribyrnong’s heritage assets.

Work with owners, developers and public agencies to secure positive heritage outcomes.

Review the efficacy of Council’s heritage policies.

Embed consideration of heritage in planning for our neighbourhoods, activity centres and public places and reserves.

Work with Traditional Owners to improve awareness and protection of our City’s Indigenous heritage.

Embed consideration of historical and cultural significance into Council’s strategies, policies and plans relating to our natural environment and open spaces.

Review and update heritage listings in Maribyrnong Planning Scheme to ensure our valued heritage is appropriately protected.



Challenges & Opportunities continued:

CHALLENGES INCLUDE:

OPPORTUNITIES EXIST TO:

Lack of access to heritage information and concerns that valued heritage places are falling into disrepair or being poorly integrated into new development.



Work with owners, developers and public agencies to achieve appropriate conservation outcomes for heritage assets.

Review the efficacy and level of compliance with heritage policies and planning permits.

Local heritage groups and cultural organisations require support



Support the local community and interest groups as custodians of Maribyrnong’s heritage.

Strengthen relationships with historical societies, friends groups and other heritage related organisations.

Promote and support the work of local historical societies and heritage-related organisations.

Improve community access to information on heritage places and objects.

Responding to climate change and addressing potential risks to historic places.



Proactively plan to adapt our historic places to be resilient in the face of climate change impacts.

Recognise the ecological sustainability benefits of conserving historic places for their embodied energy and enable their repair and reuse.

Lack of community awareness of Maribyrnong’s heritage and difficulty accessing information both Maribyrnong’s tangible and unseen heritage elements.



Improve and promote access to information about Maribyrnong’s history, heritage places, stories and traditions and historical records through online and physical channels.

Investigate ways to promote access and awareness of Maribyrnong’s physical and intangible heritage.

Identify new ways to celebrate Maribyrnong’s unique history



Support and partner with organisations to deliver projects and events on Maribyrnong’s heritage.



Tell Us Your Thoughts

Provide your feedback on the challenges and opportunities by **14 May 2023**

via:

- Online survey at Your City Your Voice: www.yourcityyourvoice.com.au
- Or Email strategic planning team: email@maribyrnong.vic.gov.au

WHAT'S NEXT?

We will use your feedback to draft a new Heritage Strategy that will guide Council's future heritage work for the next 10 years.



TIS: 131 450



NRS: 133 677 OR 1300 555 727
www.relayservice.com.au